



## ELISA Analysis Kits

- Over 1,800 ELISAs now available
- Detection of cytokine markers for all species within our portfolio
- Validation criteria including: inter- and intra-assay CV, sensitivity, recovery linearity, biological range, cross-reactivity, species-specificity, sample and shipping stability, and method comparison
- Variability avoidance with accurate reagent dispensing and thorough plate washing
- All kits backed by our technical resources

To search, please visit:

[SigmaAldrich.com/ELISA](https://SigmaAldrich.com/ELISA)

The life science business of Merck operates as MilliporeSigma in the U.S. and Canada.



# Our ELISA portfolio

Covering a diversity of research areas and species, our pre-validated, easy to use ELISAs deliver reliable and reproducible results for quantifying biomarkers in complex sample types at the pg/mL level. Our substantial portfolio currently includes over 1,800 sensitive and specific ELISAs - the easiest way to search them is at [SigmaAldrich.com/ELISA](http://SigmaAldrich.com/ELISA).

## Research areas covered



### Cancer



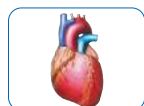
### Toxicity



### Neuroscience



### Bone Metabolism



### Cardiovascular Disease



### Immunology

- Acute Phase Proteins
- Adipokines
- Angiogenesis Biomarkers
- Apolipoproteins
- Apoptosis Pathway Proteins
- BMPs
- Bone Metabolism Biomarkers
- Cancer Biomarkers
- Cardiovascular Disease Biomarkers
- CD Markers
- Cell Signaling Pathway Proteins
- Cell Structure Proteins
- Chemokines
- Complement Factors
- Cytokines
- Growth Factors
- Gut Hormones
- IGFbps
- Immune Checkpoint Proteins
- Immunoglobulins
- Kidney Injury Biomarkers
- Liver Proteins
- Metabolic Hormones
- MMPs
- Neurodegenerative Disease Biomarkers
- Neurological Disorders Biomarkers
- Sepsis Biomarkers
- Soluble Receptors
- Thyroid Hormones
- Vascular Injury Biomarkers

## Species within our portfolio

	Cytokines	Metabolic	Cardiovascular	Angiogenesis	Signaling
	✓	✓	✓	✓	✓
	✓	✓	✓	✓	✓
	✓	✓		✓	✓
	✓				
	✓	✓			
	✓				
	✓				
	✓				
	✓				
	✓	✓			

## Metabolic/Endocrine ELISAs

Our menu of metabolic and endocrine ELISAs allows end-users a consistent and reliable method of investigating metabolic disease states or defining outcomes within toxicological studies during drug development.

Description	Species	Standard Curve Range	Sensitivity	Sample Volume	Cat. No.	Bulk Packaging Cat. No.*
Adiponectin	Human	1.56–200 ng/mL	0.2 ng/mL	10 µL	EZHADP-61K	EZHADP-61BK
Adiponectin (High Molecular Weight)	Human	1.5–200 ng/mL	0.5 ng/mL	10 µL	EZHMWAN-65K	
Adiponectin	Mouse	1–50 ng/mL	0.2 ng/mL	10 µL	EZMADP-60K	EZMADP-60BK
Adiponectin	Rat	3,125–200 ng/mL	0.4 ng/mL	10 µL	EZRADP-62K	
Amylin (active)	Human	1–100 pM	0.7 pM	50 µL	EZHA-52K	
C-Peptide	Human	0.2–20 ng/mL	0.05 ng/mL	10 µL	EZHCP-20K	EZHCP-20BK
C-Peptide	Canine	0.2–10 ng/mL	0.24 ng/mL	25 µL	EZCCP-47K	
C-Peptide 2	Mouse, Rat	25–1600 pM	15.0 pM	20 µL	EZRMCP2-21K	
C-Reactive Protein (CRP)	Human	0.12–10 ng/mL	0.2 ng/mL	2 µL	CYT298	
C-Reactive Protein (CRP)	Rat	4.9–10 ng/mL	2.5 ng/mL	2 µL	CYT294	
FGF-21	Human	31.25–2000 pg/mL	10.0 pg/mL	50 µL	EZHFGF21-19K	
FGF-21	Mouse, Rat	49.4–12,000 pg/mL	10.0 pg/mL	10 µL	EZRMFGF21-26K	
FGF-23	Human	9.9–2400 pg/mL	3.5 pg/mL	50 µL	EZHFGF23-32K	EZHFGF23-32BK
Ghrelin (active)	Human	25–2000 pg/mL	15.0 pg/mL	20 µL	EZGRA-88K	EZGRA-88BK
Ghrelin (active)	Mouse, Rat	25–2000 pg/mL	8.0 pg/mL	20 µL	EZRGRA-90K	
Ghrelin (total)	Human	100–5000 pg/mL	50.0 pg/mL	20 µL	EZGRT-89K	EZGRT-89BK
Ghrelin (total)	Mouse, Rat	0.1–10 ng/mL	0.04 ng/mL	20 µL	EZRGR-91K	
GIP (total)	Human	8.2–2000 pg/mL	4.2 pg/mL	20 µL	EZHGIP-54K	EZHGIP-54BK
GIP (total)	Mouse, Rat	8.2–2000 pg/mL	4.2 pg/mL	10 µL	EZRMGIP-55K	EZRMGIP-55BK
GLP-1 (active)	Multi-Species	2–100 pM	1.0 pM	100 µL	EGLP-35K	EGLP-35BK
GLP-1 High Sensitivity (active) $\Delta$ ••	Multi-Species	See data sheet	0.14 pM	50 µL	EZGLPHS-35K	EZGLPHS-35BK
GLP-1 (total)	Multi-Species	4.1–1000 pM	1.0 pM	20–50 µL	EZGLP1T-36K	EZGLP1T-36BK
GLP-2	Multi-Species	1–64 ng/mL	0.3 ng/mL	50 µL	EZGLP2-37K	
Glucagon $\Delta$	Human, Mouse, Rat	0.02–2 ng/mL	0.003 ng/mL	150–300 µL	EZGLU-30K	EZGLU-30BK
Growth Hormone (GH)	Mouse, Rat	0.7–50 ng/mL	0.07 ng/mL	10 µL	EZRMGH-45K	EZRMGH-45BK
Insulin	Human	2–200 µU/mL	1.0 µU/mL	20 µL	EZHI-14K	EZHI-14BK
Insulin	Mouse, Rat	0.2–10 ng/mL	0.1 ng/mL	10 µL	EZRMI-13K	EZRMI-13BK
Insulin (Animal serum free)	Human	2–200 µU/mL	0.85 µU/mL	20 µL	EZHIASF-14K	
Leptin	Canine	0.78–50 ng/mL	0.21 ng/mL	20 µL	EZCL-31K	
Leptin	Mouse	0.2–30 ng/mL	0.05 ng/mL	10 µL	EZML-82K	EZML-82BK
Leptin	Rat	0.2–30 ng/mL	0.08 ng/mL	10 µL	EZRL-83K	EZRL-83BK
Leptin “Dual Range”	Human	0.5–100 ng/mL	0.2 ng/mL	25 µL	EZHL-80SK	EZHL-80BK
Procollagen Type IIA N-Propeptide (PIIANP)	Human	lot dependent	30.0 ng/mL	5 µL	EZPIIANP-53K	
Proinsulin (total)	Human	2–200 pM	0.5 pM	20 µL	EZHPI-15K	EZHPI-15BK
PYY (total)	Human	10–2000 pg/mL	6.5 pg/mL	20 µL	EZHPYYT66K	
Resistin	Human	0.16–5 ng/mL	0.02 ng/mL	20 µL	EZHR-95K	EZHR-95BK
SAA-3	Mouse	0.078–5 µg/mL	0.078 µg/mL	10 µL	EZMSAA3-12K	

\* Bulk packaging available on select kits — more environmentally friendly and saves space (10 kit equivalent)

•• Preferred assay for measuring GLP-1 (active)

$\Delta$  Chemiluminescent assay

## Neuroscience ELISAs

Get a complete picture of the complexities associated with normal and disease states of the nervous system with reliable quantification of biomarkers using our neuropeptide and neurodegenerative ELISAs.

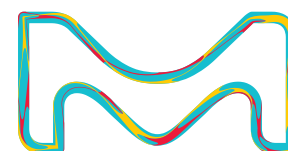
Description	Species	Standard Curve Range	Sensitivity	Sample Volume	Cat. No.
Amyloid beta 1-40	Human	16–500 pg/mL	4 pg/mL	50 µL	EZHS40
Amyloid beta 1-42	Human	16–500 pg/mL	5 pg/mL	50 µL	EZHS42
Amyloid beta, Set	Human	Contains 1 each of EZHS40 and EZHS42			EZHS-SET
Amyloid beta (Brain) 1-40	Human	16–500 pg/mL	4 pg/mL	50 µL	EZBRAIN40
Amyloid beta (Brain) 1-42	Human	16–500 pg/mL	5 pg/mL	50 µL	EZBRAIN42
Amyloid beta (Brain), Set	Human	Contains 1 each of EZBRAIN40 and EZBRAIN42			EZBRAIN-SET
BDNF (Brain-Derived Neurotrophic Factor)	Human, Rat	7.8–500 pg/mL	7.8 pg/mL	50 µL	CYT306
GFAP (Glial Fibrillary Acidic Protein)	Human, Mouse, Rat	1.5-100 ng/mL	1.5 ng/mL	100 µL	NS830
NPY (Neuropeptide Y)	Human	5-1000 pg/mL	2 pg/mL	50 µL	EZHNPY-25K
NPY (Neuropeptide Y)	Mouse, Rat	0.01-2 ng/mL	0.004 ng/mL	20 µL	EZRMNPY-27K
PEDF (Pigment Epithelium-Derived Factor)	Human	0.9–62.5 ng/mL	0.9 ng/mL	50 µL	CYT420
Phosphorylated Neurofilament, (pNF-H) Sandwich	Multi-Species	0.0293–15 ng/mL	0.0585 ng/mL	1-10 µL	NS170
S100B	Human	2.7-2000 pg/mL	1.3 pg/mL	50 µL	EZHS100B-33K

## Radioimmunoassays (RIAs)

RIAs have long been considered a valuable, economical and accurate way to measure protein concentration. As many researchers move away from using radioactive material, please consider using our other high quality immunoassays for your research needs.

Description	Species	Standard Curve Range	Sensitivity	Sample Volume	Cat. No.
Adiponectin	Human	lot dependent	1 ng/mL	5 µL	HADP-61HK
C-Peptide	Canine	0.156–20 ng/mL	0.15 ng/mL	50 µL	CCP-24HK
C-Peptide	Human	0.1–5 ng/mL	0.1 ng/mL	50 µL	HCP-20K
Ghrelin (active)	Human	lot dependent	7.8 pg/mL	50 µL	GHRA-88HK
Ghrelin (total)	Human	lot dependent	93 pg/mL	50 µL	GHRT-89HK
GLP-1 (active)	Multi-Species	10–500 pM	3 pM	300 µL	GLP1A-35HK
GLP-1 (total)	Multi-Species	10–1000 pM	3 pM	300 µL	GLP1T-36HK
Glucagon	Multi-Species	20–400 pg/mL	20 pg/mL	50 µL	GL-32K
Insulin	Porcine	2–200 µU/mL	2 µU/mL	50 µL	PI-12K
Insulin	Rat	0.1–10 ng/mL	0.1 ng/mL	50 µL	RI-13K
Insulin LisPro	Multi-Species	2.5–250 µU/mL	2.5 µU/mL	100 µL	LPI-16K
Insulin (sensitive)	Rat	0.02–1 ng/mL	0.02 ng/mL	50 µL	SRI-13K
Insulin Specific	Human	2–200 µU/mL	2 µU/mL	50 µL	HI-14K
Leptin	Human	0.5–100 ng/mL	0.5 ng/mL	50–100 µL	HL-81K
Leptin	Multi-Species	1–50 ng/mL	1 ng/mL	50 µL	XL-85K
Proinsulin	Human	2–100 pM	2 pM	100–200 µL	HPI-15K
PYY (3-36)	Human	lot dependent	20 pg/mL	<100 µL	PYY-67HK
PYY (total)	Human	lot dependent	10 pg/mL	<100 µL	PYYT-66HK

© 2020 Merck KGaA, Darmstadt, Germany and/or its affiliates. All Rights Reserved. Merck, Millipore, the vibrant M, and Sigma-Aldrich are trademarks of Merck KGaA, Darmstadt, Germany or its affiliates. All other trademarks are the property of their respective owners. Detailed information on trademarks is available via publicly accessible resources. 32389 07/2020



**Laborspirit Lda**  
 Distribuidor Merck  
 217 579 297  
 vendas@laborspirit.com